



# HEAVY DUTY ASHPALT ANCHORING

PART #RE-HDAA

**IMPORTANT: WEAR SAFETY GLASSES • CHECK UNDERGROUND FACILITIES**

- Tools Required:**
- Mallet / Hammer
  - Wax Pencil / Marker
  - Tape Measure
  - 7/8" Masonry Drill Bit
  - 9/16" Ratchet
  - Measuring Cup
  - 3/8 Cup of Water

- Parts Included:**
- 1 XL Unit
  - 4 HD Anchors, Washers, 9/16 Bolts
  - 2 Bags of Grout



**DO NOT PLACE  
WITHIN 10"  
OF ANY CURB**



**MARK 4 HOLES**



**MARK YOUR  
DRILL BIT AT 6"**



**DRILL 4 HOLES  
7/8" DIAMETER  
6" DEEP**



**CLEAR AWAY ANY  
DUST OR DEBRIS**



**MEASURE 3/8 CUP WATER  
GATHER ALL MATERIALS  
PRIOR TO MIXING GROUT!**



**SLOWLY MIX APX.  
3/8 CUP WATER WITH  
GROUT MIXTURE  
(DON'T DUMP ALL THE WATER,  
ADD JUST A LITTLE AT A TIME)**



**KNEAD TO SYRUP  
CONSISTENCY  
(ONLY MIX ONE BAG  
AT A TIME!)**



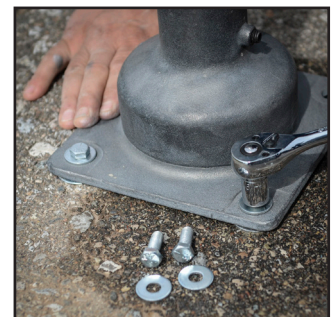
**POUR MIXTURE INTO  
THE 4 HOLES  
(ONE BAG PER TWO HOLES)**



**USING A RUBBER  
Mallet, TAP BOLTS  
INTO THE HOLES**



**WITH A DAMP CLOTH,  
WIPE AWAY ANY EXCESS**



**USING A 9/16"  
RATCHET,  
TIGHTEN BOLTS**



2236 112th Ave, Suite 80, Holland, MI 49424  
616-928-0829 • [www.FlexpostInc.com](http://www.FlexpostInc.com)

REV. 10/31/19