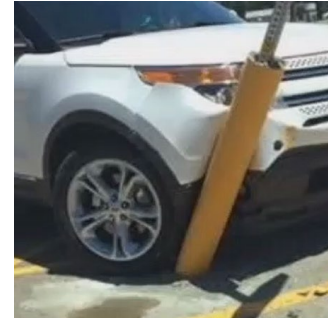


# Why Use the FlexPost® XL-B52/8 Signpost vs. Core-Drilled Bollard Signpost?



**FlexPost®  
XL-B52/8  
Signpost**



**Core-Drilled  
Bollard  
Signpost**

## Installation Time/Difficulty

- Installs in 30 minutes or less using simple tools. No mixing of concrete or heavy equipment needed. Normal traffic flow can continue
- Requires heavy equipment, the mixing of concrete, several hours of labor, and cordoning off the parking lot – limiting access to the facility

## Sustainability

- Flexible design provides a pathway to sustainability: Reduces burning of fossil fuels, keeps difficult to recycle materials out of the landfill, helps eliminate waste
- Signpost needs to be replaced every time it is struck by a vehicle, which requires burning of fossil fuels by heavy equipment, adding concrete to the landfill, and waste in manufacturing and materials

## Lot Reconfiguration

- Remove 4 bolts, fill in the holes
- Requires heavy equipment to remove

## Damage Potential

- Modular Design: Replace posts and bollards vs. the entire unit
- Design is not modular: Must replace entire unit when damaged

## Weight

- 41 lbs. total – lightweight yet durable, easy to handle and install, lower freight costs, easy to transport – fits & fills up a truck bed
- 160 lbs. per 8" section of pipe – heavy, more difficult to handle/install, higher freight costs, not easy to fit multiple units in a standard truck bed

## Flexibility

- Flexes upon impact, returns to upright
- Does not flex, damages car and lot upon impact

## Cost

- Around \$550 for product, plus installation
- Average cost of \$1,500 – including product and installation



2236 112<sup>th</sup> Ave., #80 · Holland, MI 49424  
888-307-6610 · flexpostinc.com  
Email: sales@flexpost.net

