



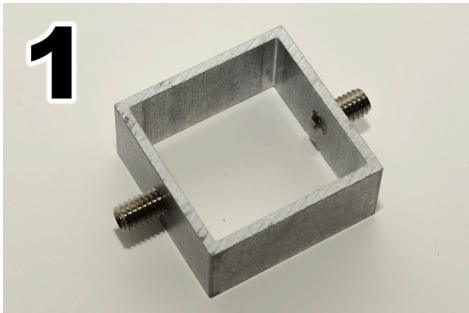
SIGN BRACKET INSTRUCTIONS

Tools Required:

- 1/2" Wrench or Socket
- 5/32" Allen Key

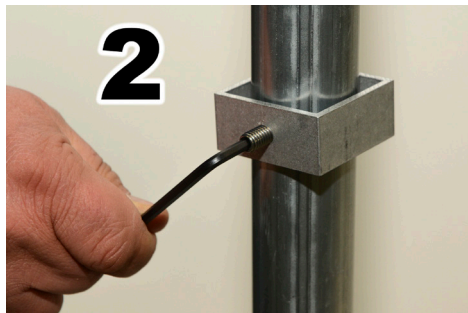
Parts Included:

- 2 Mounting Brackets
- 4 Flange Nuts
- 4 Set Screws



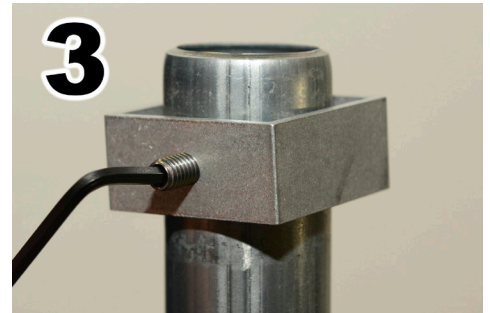
1

- Insert set screws into holes on the mounting bracket
- Slide both brackets onto the post



2

- Position the bottom mounting bracket loosely, you will move it soon



3

- Position the top bracket in desired location
- Tighten to post by turning set screws clockwise



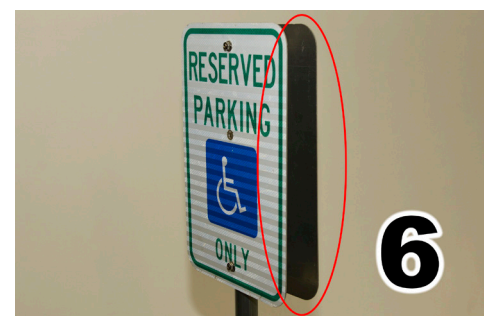
4

- Using your sign as reference, move the bottom mounting bracket into place and tighten the set screws, securing the brackets to the pole



5

- Use a 1/2" wrench or socket to tighten flange nuts to hold sign in place



6

- You can even mount two signs back to back!



2236 112th Ave, Suite 80
Holland, MI 49424
616-928-0829 • www.flexpostinc.com