

FLEXPOST-XL™ BASE ANCHORING INSTRUCTIONS FOR ADHESIVE

Tools Required:

- Marker
- Gloves
- Standard Caulk Gun
 - Rag
 - 3/16" Allen Key



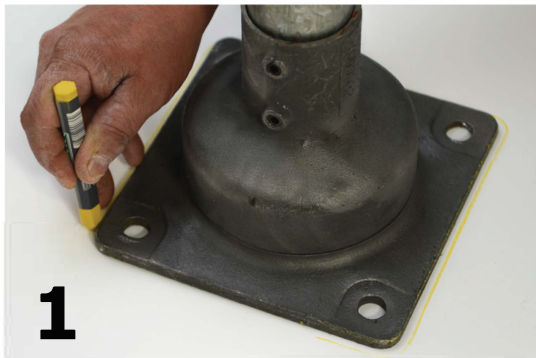
IMPORTANT NOTE:
SPRING SHOULD
APPEAR CURVED
- DO NOT CUT WIRE -

Parts Included:

- 1 Base Plate
- 1 MasterWeld 948
- 1 Set Screw

IMPORTANT: MUST INSTALL BASE AT LEAST 10" FROM ANY CURB

NOTE: THIS ADHESIVE PRODUCT IS NOT INTENDED TO BE USED ON ASPHALT



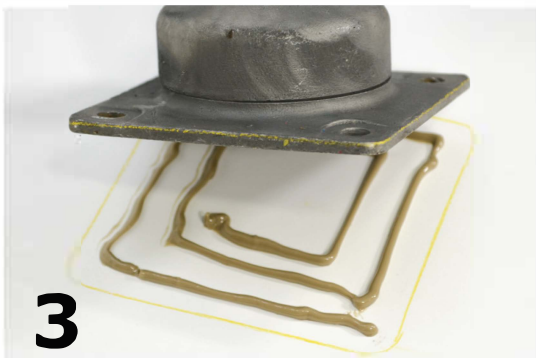
1

- *Ensure that the application area is free of dirt, grease, oil, and moisture*
- *Place the base in desired location and use a marker to outline the exterior of the base*



2

- *Using the MasterWeld 948, glue the area within the outline*



3

- *Place the base on the adhesive within the drawn lines*



4

- *Adhesive will come out the sides. Use a rag to wipe excess. Wait 24 hours for adhesive to be fully cured*

**FLEX
POST®**

2236 112th Ave, Suite 80
Holland, MI 49424
616-928-0829 • www.FlexpostInc.com