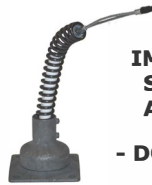


FLEXPOST-XL™ BASE ANCHORING INSTRUCTIONS FOR CONCRETE

Tools Required:

- Marker / Wax Pencil
- High Speed Power Drill
- 1/2" Masonry Drill Bit
- Socket Wrench with 3/4" drive
- Torque Wrench (Optional)
- 3/16" Allen Key



**IMPORTANT NOTE:
SPRING SHOULD
APPEAR CURVED**

- DO NOT CUT WIRE -

Parts Included:

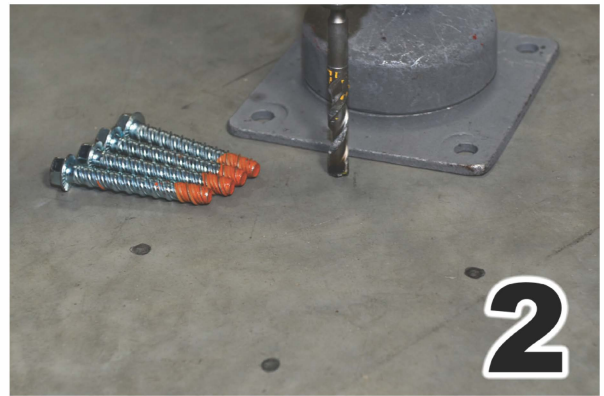
- 1 Base Plate
- 4 Concrete Wedge Bolts
- 2 Black Set Screws
- 1 Silver Set Screw

IMPORTANT: MUST INSTALL BASE AT LEAST 10" FROM ANY CURB



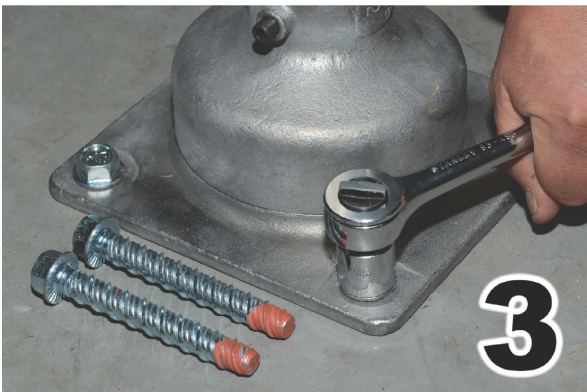
1

- Place base plate in desired anchoring location
- Mark the four base holes with a wax pencil



2

- Using a 1/2" masonry bit, drill 5" in depth



3

- Place the base plate over the four holes and use a socket wrench or high speed drill with a 3/4" drive to thread all four bolts



4

- Tighten all 4 bolts so the base plate is flush with the concrete

**FLEX
POST®**

2236 112th Ave, Suite 80
Holland, MI 49424
616-928-0829 • www.FlexpostInc.com